

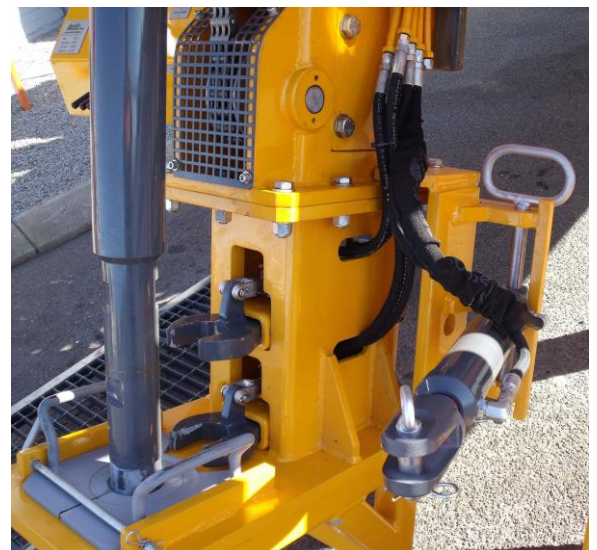


X300HC Drill Rig



Mast

- Compact box section mast structure, 5.6 metres overall length (plus winch and table foot).
- Heavy-duty dump mast plate with single hydraulic cylinder providing 1.8 metre dump stroke.
- Twin hydraulic mast raise cylinders.
- 3.5" bore x 2" rod x 75" stroke feed cylinder actuating 2:1 ratio travelling sheave system providing 3.8 metres of rotation head stroke.
- Rapid head traverse speed (2.8 seconds top to bottom, 4.6 seconds bottom to top).
- Variable pull-back and pull-down fine feed control.
- 7,500 kg pull-back capacity with dual heavy duty pull-back and single pull-down leaf chains.



- Slips table assembly with air actuated upper and lower Bisalloy rod spanners and hydraulic cylinder mounted to suit breakout wrench.
- Hands free breakout.



Rotation Head

- AustEx X300 drive head with heavy-duty hardened and ground gears.
- Travelling head plate mounted to mast via 4 heavy-duty large diameter adjustable vee rollers.
- Twin hydraulic rotation motors providing 4000 Nm of rotation torque at 85 rpm.
- 0 to 170 rpm speed range.
- 70mm diameter hollow bore spindle.



Base

- 4.3 metre long rig base x 2.3 metres wide to fit inside standard sea container.
- Design to suit crawler track frame and/or truck fitment.
- Rear hydraulic stabilising jack legs fixed into rig base.
- Front hydraulic stabilising jack legs, each side incorporated into hydraulically extendable frame.
- Independent tilting, dumping & sliding rod bin - 30 x 3 metre (3½") rods = 90 metre capacity.

Power Unit

- Caterpillar 3406 diesel engine producing 515 horsepower at 1800 rpm or
- Cummins QSX15 diesel engine producing 600 horsepower at 1800 rpm.
- Atlas Copco 2-stage ORX10 compressor air-end providing 986 cfm at 400 psi
- Hydraulic pump group direct coupled to front of Caterpillar engine consisting of:
 - 1 x Rexroth A10V100 piston pump (171 litres/minute @ 3500 psi)
 - 1 x Rexroth A10V100 piston pump (111 litres/minute @ 1500 psi)
 - 1 x Rexroth A10V71 piston pump (121 litres/minute @ 3000 psi)



Control Cabinet

- Pressed steel drillers control consol with hinged opening doors on both sides.
- 4 spool Rexroth 4M15 directional control valve bank:
 - Section 1 - Rotation
 - Section 2 - Fast Feed
 - Section 3 - Survey Winch
 - Section 4 - Spare
- 6 spool directional control valve bank # 1:
 - Section 1 - Left Hand Rear Jack Leg
 - Section 2 - Right Hand Rear Jack Leg
 - Section 3 - Left Hand Front Jack Leg
 - Section 4 - Right Hand Front Jack Leg
 - Section 5 - Front Jacks Extension
 - Section 6 - Spare
- 6 spool directional control valve bank # 2:
 - Section 1 - Water Pump
 - Section 2 - Rod Bin Lift
 - Section 3 - Rod Bin Dump
 - Section 4 - Mast Lift
 - Section 5 - Mast Dump
 - Section 6 - Spare
- 6 spool directional control valve bank # 3:
 - Section 1 - Spare
 - Section 2 - Spare
 - Section 3 - Spare
 - Section 4 - Breakout Cylinder
 - Section 5 - Down Hole Air/Water Valve
 - Section 6 - Fine Feed
- Infinitely variable fine feed flow control valve.
- Infinitely variable pull down pressure control.
- Infinitely variable hold back pressure control.
- Pneumatic foot pedal for air actuated upper spanner.
- Pneumatic directional control valve for air actuated lower spanner.
- Engine and compressor controls.
- Gauges:
 - Engine - RPM Tachometer, Oil Pressure, Water Temperature.
 - Compressor - Discharge Temperature, Interstage Pressure, Receiver Air Pressure, Down Hole Air Pressure.
 - Hydraulic - Main System Pressure, Pull Down Pressure, Hold Back Pressure, Cooler Fan Pressure, Auxiliary Pressure.
- All items on control consol fascia labeled.



Miscellaneous

- Double element filtration for engine and compressor air inlets.
- 450 litre capacity hydraulic oil tank with level sight glass and return & case drain filtration.
- Hydraulic pressure filtration.
- Allied upright cooler pack (rated to 55 degree C ambient) incorporating engine water radiator, compressor oil, hydraulic oil & diesel fuel coolers. Hydraulically driven fan motor.
- FMC A0413C vertical piston water pump.
- Top of mast mounted survey winch with brake.
- 24 volt electrical system including heavy-duty battery box and emergency stop buttons.
- Safety guarding to moving components.
- Fold up driller's platform.
- All fabricated components sand-blasted prior to painting. All components primed and top coated with high quality 2-pack urethane paint in the customers colour of choice.



Price : 695,000.00 AUD